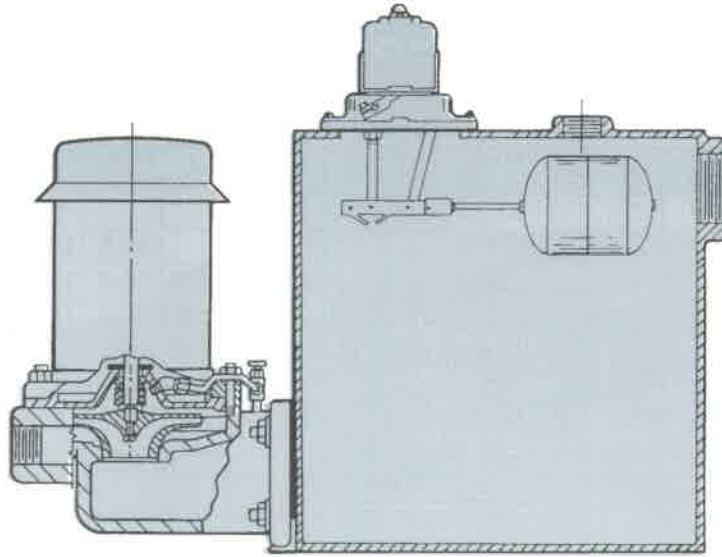


## FEATURES

- Close coupled, centrifugal design with bronze enclosed type impeller (improved NORYL on 20 psi units).
- Impeller is designed to assure smooth, efficient water passage.
- Designed for long-life.
- Mechanical seal withstands temperatures to 220°F, recirculated to pump suction to assure adequate lubrication at all times.
- Heavy duty, drip proof, 3450 rpm, 60 Hz motor; designed for continuous duty with pre-lubricated, shielded ball bearings and stainless steel shaft. Your choice of single phase 115/230 volt with built-in overload protection or three phase 220/440 volt. T.E.F.C. available upon request.
- Low maintenance, easily serviceable design; any part subject to normal wear is readily accessible. Impeller and seal can be serviced without disturbing system piping or electric connections.
- Universal type 4-bolt flange mounting.



TYPICAL VMX CROSS-SECTION

## SELECTION DATA

| PHASE & VOLTAGE     | DISC. PRESS | HP  | 5,000 EDR             | 12,000 EDR             |                       | 8,000 EDR               |                        | 12,000 EDR              |                        |
|---------------------|-------------|-----|-----------------------|------------------------|-----------------------|-------------------------|------------------------|-------------------------|------------------------|
|                     |             |     | SIMPLEX<br>6 GAL C.I. | SIMPLEX<br>15 GAL C.I. | DUPLEX<br>15 GAL C.I. | SIMPLEX<br>10 GAL STEEL | DUPLEX<br>20 GAL STEEL | SIMPLEX<br>10 GAL STEEL | DUPLEX<br>20 GAL STEEL |
| Single<br>115/230 V | 20          | 1/3 | VMX 52S               | VMX 102S               | VMX 102D              | VMX 82S                 | VMX 82D                | VMX 122S                | VMX 122D               |
|                     | 30          | 1/2 | VMX 53S               | VMX 103S               | VMX 103D              | VMX 83S                 | VMX 83D                | VMX 123S                | VMX 123D               |
|                     | 40          | 3/4 | VMX 54S               | VMX 104S               | VMX 104D              | VMX 84S                 | VMX 84D                | VMX 124S                | VMX 124D               |
| Three<br>230/460 V  | 20          | 1/3 | VMX 52S               | VMX 102S               | VMX 102D              | VMX 82S                 | VMX 82D                | VMX 122S                | VMX 122D               |
|                     | 30          | 1/2 | VMX 53S               | VMX 103S               | VMX 103D              | VMX 83S                 | VMX 83D                | VMX 123S                | VMX 123D               |
|                     | 40          | 3/4 | VMX 54S               | VMX 104S               | VMX 104D              | VMX 64S                 | VMX 84D                | VMX 124S                | VMX 124D               |

## OPTIONAL SUCTION ISOLATION VALVE

An optional suction isolation valve is available for simplex and duplex units. When installed between the pump and receiver on simplex units, it allows the pump motor assembly to be removed without draining the receiver. On duplex units, it permits one pump to be removed while the other one continues to operate without interrupting system operation.

